



Pediatric  
Research  
Foundation

# Accelerating **cure** for **kids**

ANNUAL REPORT 2022-2023



# Table of Contents



3

CHANGE OF NAME

4

MESSAGE FROM THE CHAIR  
OF THE BOARD OF DIRECTORS

5

MESSAGE FROM THE PRESIDENT AND CEO,  
OUR MISSION AND VALUES

6

SOME ADVANCES  
IN OUR RESEARCH PROJECTS

9

TESTIMONIALS

11

RESEARCH PROJECTS FUNDED

15

DISTRIBUTION OF FUNDS  
FOR PEDIATRIC RESEARCH

17

OUR MENTAL HEALTH CAMPAIGN  
AND OUR BUILDERS' MATCH FUND

18

OUR RELATIONSHIP MARKETING CAMPAIGNS

19

OUR SOCIAL MEDIA

20

OUR EVENTS

23

OUR PUBLIC ACTIVITIES AND INITIATIVES

25

OUR BOARD OF DIRECTORS  
AND OUR SCIENTIFIC COMMITTEE

26

OUR GOVERNORS AND OUR TEAM

27

OUR DONORS



## The sky was the limit in 2023

A wind of renewal has swept through the Foundation with new colours, a new brand image and a new name, which were introduced gradually in 2022–2023 and fully implemented in the spring of 2023. These extensive changes will help better convey the [Foundation's primary mission](#) in a clear and engaging way.

The Pediatric Research Foundation will continue to focus all its initiatives on the work of the scientific community and the advances it promises. This is welcome news, enthusiastically received by our donors and all those who contribute to our mission every day!

The pandemic we have just gone through has confirmed that our mission is more vital than ever before, and that research must remain at the core of our concerns. It is with this perspective that we have chosen to enthusiastically embark on the path of change with a heart full of hope.

What's our goal for the next few years? To continue to be a universal catalyst in pediatric research by funding promising new projects that will help cure even more children faster.

This is our pledge, which has always been the same, and which we repeat to anyone who wants to take part in the movement: let's accelerate the pace of discoveries in pediatric research, so that we can cure every single sick child.





## An exciting return to our roots

**Little by little, with victories large and small, the Foundation of Stars—now known as the Pediatric Research Foundation—has cured and saved the lives of thousands of young Quebecers. It has led to discoveries that have helped enhance the reputation of our researchers worldwide.**

Whether you're a donor, volunteer or Foundation staff member, you have every reason to be proud, and deserve our full gratitude.

When I joined the Board of Directors in 2015, I would never have imagined that we could have accomplished so much in just eight years. Despite the pandemic, which has halted many of our activities, we have taken on a multitude of challenges that are as complex as they are stimulating.

To our great delight, and to the benefit of children's health, the 2022-2023 year has again shown that we are on the road to progress in research, thanks to inspiring projects that are worthy of our support.

Over the past year, we have sponsored 17 projects in the Foundation's 6 major research axes, with donations of over \$700,000.

As you can see from the [list of research projects funded](#) over the past year, mental health was a central theme in the portfolio of projects we supported.

I'm sure you'll agree that this is a clear sign of the times: mental health has now become one of the major issues of our decade. Long overshadowed, this aspect of global health takes on greater importance in this post-pandemic era.

Whether they directly involve our young clientele or their parents, mental health research projects will pave the way for new approaches and solutions to ensure a smoother and brighter future for them.

In addition to a change of brand image and name, the year that has just ended saw the inauguration of the [Provincial Competition for Young Researchers Scholarships](#), which allows the Foundation to provide scholarships to four highly talented emerging scientists, serving as a springboard to launch their research careers.

All these initiatives in support of children's causes would not have been possible without our fundraising activities that enjoyed a resurgence this year. I'd like to highlight the Alpine Challenge, the Montreal Wine Auction, the Sherbrooke Wine Auction, and the Tough Mountie Challenge, all of which have resumed their pre-pandemic momentum and success.

**Our heartfelt thanks go to all those who participated in or helped organize these events.**

***"Together,  
let's continue  
to be  
champions  
for children's  
health."***



**ALAIN AUCLAIR**

CHAIR OF THE BOARD  
OF DIRECTORS

2019-2023



#### MESSAGE FROM THE PRESIDENT AND CEO

## A pivotal year in 2023

I am extremely proud of the year that has just ended, which was marked by resilience, progress and evolution. Despite the many obstacles that have been put in our path since 2020, the Foundation has continued to innovate, to launch new projects and to find ever more original ways of contributing to research and curing even more children.

Along with our name change, which will let us communicate our mission even more effectively, tools such as our Major Donors Committee, Young Leaders Circle and Builders' Match Fund Campaign help us to do even more each year to turn research into concrete health solutions for young people.

All these achievements would not have been possible without the vital contribution of people like Alain Auclair, who is stepping down as Chair of our Board of Directors this year but will stay on as a board member. Our heartfelt thanks go to this dedicated and generous man, who will be succeeded by Benoît Crowe.

***"Let's continue to work together to support our research community here, now and in the future."***



**JOSÉE SAINT-PIERRE**

PRESIDENT AND CEO

## Our mission

To fund pediatric research with a view to protecting, promoting and improving the health and well-being of children.

## Our vision

To drive progress in pediatric research in Canada, thereby improving children's health and increasing the chances of recovery.

## Our values

**INTEGRITY – EXCELLENCE – PASSION – RESPECT**



 **Discover**  
**what drives us!**



# One step at a time, more and more children cured!

The [Foundation's support](#) has paved the way for steady progress in [our six research axes](#). Meanwhile, the contributions of our donors and volunteers continue to propel us forward. One project in particular stood out over the past year.

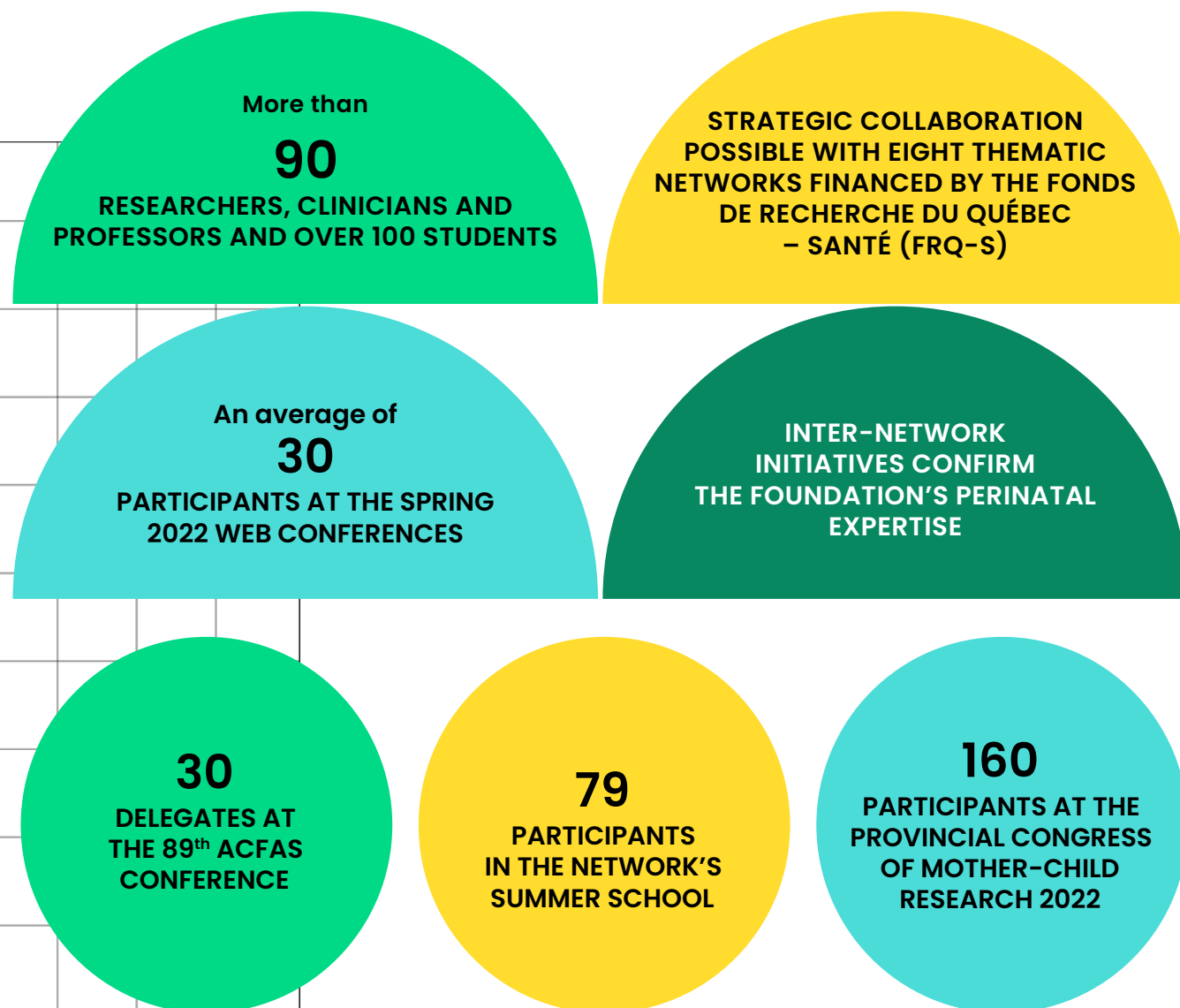
## Quebec Research Network in Perinatal Determinants of Children's Health

(QUEBEC PERINATAL RESEARCH NETWORK)

### THE TEAM

- › Dr. Anne Monique Nuyt, MD, neonatologist, full professor, Département de pédiatrie, Université de Montréal – CHU Sainte-Justine
- › Prof. Sylvana Côté, PhD (psychology), full professor, École de santé publique, Département de médecine sociale et préventive, Université de Montréal – CHU Sainte-Justine
- › 12 collaborators from 4 Quebec research centres

## THE NETWORK BY THE NUMBERS



## A FEW WORDS ABOUT THE PROJECT

The period between conception, the neonatal stage and early childhood has a profound influence on children's health. While this is an established fact, it is not very well understood.

To address this reality, the Quebec Research Network in Perinatal Determinants of Children's Health (Quebec Perinatal Research Network) will bring together researchers from different and complementary disciplines to further our understanding of the influence of these factors on child health.

The network is the first to propose a multidisciplinary approach to research on the perinatal determinants of children's health. Moreover, it will also be the very first to provide logistical, scientific and financial resources for a more comprehensive, decompartmentalized approach to children's health.

Thanks to support from the Foundation, the network's structure has been implemented and grants have been awarded to doctoral and post-doctoral students. A review and analysis of existing and potential collaborations was completed, and colloquia and scientific days were held. Dr. Isabelle Boucoiran and Dr. Arnaud Gagneur have also created a biobank for the conservation of placentas from women with COVID-19 and healthy women.

Work is continuing with a view to a full network rollout over the next few years.



## A spectacular leverage effect

When the Pediatric Research Foundation funds a promising research project, various institutions join forces.

In research funding, each dollar invested represents the equivalent of 5 to 20 times as much –quite a leverage effect!

For instance, with a \$10 donation, the multiplier effect is 5 to 20 times, and even 75 times in the case of a research platform on prenatal and postnatal factors.

## Solid credibility

The Foundation's credibility acts as a real catalyst for research on childhood diseases.

Here's just one example.

In 2020–2021, for the initial phase of their project, 14 scientists from Université Laval and Université de Montréal, in partnership with Quebec's pediatric research centres, **received financial support of nearly \$40,000 from the Foundation. They were then given \$2.3 million from the Canadian Institutes of Health Research (CIHR) and \$600,000 from the Fonds de recherche du Québec – Santé (FRQS).**

This project has created a research platform open to all scientists in Quebec and elsewhere who are interested in prenatal and postnatal factors that contribute to children's health and development.

Under the guidance of Prof. Gina Muckle and Dr. Richard E. Bélanger of the Centre de recherche du CHU de Québec-Université Laval, scientists using the platform will be able to document cannabis consumption during pregnancy, and examine, among other things, the possible effects of prenatal exposure to this substance.



# Testimonials

**Positive,  
concrete and  
gratifying results**

**Who are the children that benefit from the advances in research to which the Foundation contributes? Here are just some of the stories that show how your donations help us make a difference.**



ÉLODIE

## A LIFE-CHANGING SCREENING TEST

Élodie is 19, almost 20, and entering her final year of CEGEP in human sciences. She plans to study administration at Université de Sherbrooke. She loves plants: “I have 10 of them—and that’s just in my room!” She also enjoys hanging out with people her own age, eating in restaurants and going to movies. Élodie leads a normal young adult life, despite the fact that she suffers from congenital hypothyroidism. Simply put, her thyroid gland doesn’t produce the hormones that regulate metabolism.

Had she not been diagnosed early as a baby, this condition could have had serious consequences on her development: low muscle tone, psychomotor retardation and, in a worst-case scenario, intellectual disability. “Luckily, I was diagnosed at birth, thanks to the test that is given to all newborns, the little prick under the foot,” she explained.

“I’ve been followed for most of my life by Dr. Judith Simoneau-Roy, an endocrinologist at the CHU de Sherbrooke,” said Élodie. When I started to have symptoms of hypothyroidism, my treatment was adjusted, which could produce minor side effects, but other than that, nothing to report!”

“My condition has never stopped me from doing anything. I’ve been able to take part in all kinds of sports and activities—all thanks to the research that led to the technique for diagnosing hypothyroidism,” added the young woman.

“I’m very grateful to the people who support research. That’s why it’s so important for me to get involved with the Pediatric Research Foundation and share my story. Every donation is important, no matter the amount. It’s by combining them, by collecting them, that it makes a difference. Today, people like me can live a completely normal life and for that I say: Thank you!”

– Élodie, with gratitude.



## LIAM'S BUMPY YET COURAGEOUS JOURNEY

“Eleven years ago, on October 18, 2011, my husband and I welcomed our first child, Liam, after a perfectly normal pregnancy. Unfortunately, my delivery was anything but normal, with terrible consequences for our baby.

When Liam was born, he wasn't breathing, his heart rate was way too slow, with an Apgar score of 1. Healthy babies have an Apgar score between 7 and 10! He was immediately intubated while resuscitation was carried out. A single heartbeat kept him alive . . .

The pediatrician on duty immediately recognized what was wrong with our baby: hypoxic-ischemic encephalopathy (HIE). In other words, a lack of oxygen and restricted blood flow had affected his brain. A rare but devastating condition, which can cause severe neurodevelopmental disorders, including cerebral palsy, intellectual disability and, even worse, death. Liam was rushed to another hospital for therapeutic hypothermia treatment.

All I wanted at the time was for my baby to pull through, to cling to life so that I could finally hold him tight in my arms. Miraculously, Liam responded well to treatment! Despite lesions discovered in his brain following an MRI on his fifth day of life, which could later present certain challenges in his motor development, the prognosis was good. After 10 days, he was at last able to leave the hospital!

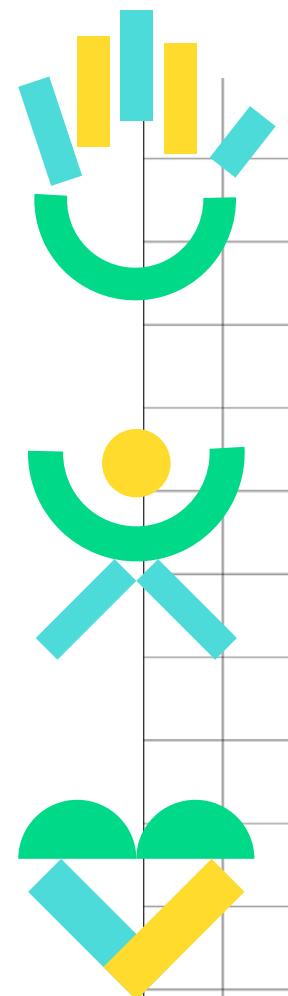
Liam's development was the same as other children his age, with no delays to report. So much so that, at the age of two, the rigorous monitoring which he had undergone since birth came to an end. Our child was “normal.” What a relief!

However, when Liam started nursery school, my husband and I could clearly see that our son had attention problems and poor impulse control. He was diagnosed with Attention Deficit Hyperactivity Disorder (ADHD) and Generalized Anxiety Disorder at the age of six.

My big boy is now 10 years old. He is in the fifth grade, doing well at school and has a black belt in taekwondo. His toughest battle, however, is with his mental health. Even though we're proud of him and know how lucky we are to have a healthy child in spite of everything, the consequences of his HIE will continue to be very challenging for our family.

I cannot stress enough that research is the key for better understanding HIE and its impact. After our son's birth, we tried to find out what the future had in store for him but were given few answers to our persistent queries.”

– Angela White, proud mother of Liam





# Funded research projects



Structured research projects and distinguished researchers receive funding from the Pediatric Research Foundation to advance research on childhood diseases. This year, the funds awarded to major pediatric and peripheral research centres in Quebec have enabled the establishment of structured research projects in mental health.

## Structured research projects

### PROJECT

Predicting exercise-induced hypoglycemia in youth with type 1 diabetes



### PRINCIPAL INVESTIGATOR

Prof. MARZIA ANGELA CREMONA

### AFFILIATED RESEARCH CENTRE

RESEARCH CENTRE – MATERNAL AND CHILD HEALTH – CHU DE QUÉBEC

### RESEARCH AXIS

POPULATION HEALTH AND BEST HEALTH PRACTICES

### COLLABORATORS

- > Monia Rekik, Université Laval
- > Mélanie Henderson, CHU Sainte-Justine

[FIND OUT MORE +](#)



### PROJECT

Pilot study on using liquid biopsies to improve respiratory pathogen screening in children with cystic fibrosis



### PRINCIPAL INVESTIGATOR

Prof. SANDRA ISABEL

### AFFILIATED RESEARCH CENTRE

RESEARCH CENTRE – MATERNAL AND CHILD HEALTH – CHU DE QUÉBEC

### RESEARCH AXIS

INFECTIOUS AND IMMUNE DISEASES

### COLLABORATORS

- > Dr. Valerie Waters, Sick Kids, University of Toronto
- > Dr. Jesse Papenburg, Montreal Children's Hospital – McGill University
- > Dr. Patrick Daigneault, CHU de Québec – Université Laval
- > Dr. Andrée-Anne Boisvert, CHU de Québec – Université Laval
- > Dr. Jacques Corbeil, Centre de recherche du CHU de Québec – Université Laval
- > Dr. Helen Groves, Royal Belfast Hospital for Sick Children, Queen's University Belfast, Northern Ireland

[FIND OUT MORE +](#)



#### PROJECT

The role of FMRP  
in cerebral cholesterol metabolism



PRINCIPAL INVESTIGATOR  
Dr. ARTUELA ÇAKU

#### AFFILIATED RESEARCH CENTRE

MOTHER-CHILD RESEARCH CENTRE – CHU DE SHERBROOKE

#### RESEARCH AXIS

NEURODEVELOPMENT

#### COLLABORATORS

› Prof. François Corbin and Prof. Michelle Scott,  
Mother-Child Research Centre – CHU de Sherbrooke

#### PROJECT

Validating the impact of the EMMIE  
program (Maternal Motivational  
Interviewing for Childhood Immunization)  
on parents' susceptibility to misinformation  
about vaccination



PRINCIPAL INVESTIGATOR  
Dr. ARNAUD GAGNEUR

#### AFFILIATED RESEARCH CENTRE

MOTHER-CHILD RESEARCH CENTRE – CHU DE SHERBROOKE

#### RESEARCH AXIS

INFECTIONS AND NEONATOLOGY

#### COLLABORATORS

› Eve Dubé (INSPQ)  
› Danielle Auger (MSSS)

#### PROJECT

Validation of the Inolivent-9 total  
fluid ventilation prototype in  
an animal model comparable  
in weight to a nano-preterm infant



PRINCIPAL INVESTIGATOR  
Dr. ETIENNE FORTIN PELLERIN

#### AFFILIATED RESEARCH CENTRE

MOTHER-CHILD RESEARCH CENTRE – CHU DE SHERBROOKE

#### RESEARCH AXIS

NEONATOLOGY

#### COLLABORATORS

› Christophe Morin (PhD student), Philippe Micheau  
and Dr. Jean-Paul Praud, Mother-Child Research Centre  
– CHU de Sherbrooke

#### PROJECT

Study of cerebral vasculature in children  
with Down syndrome (Trisomy 21)



PRINCIPAL INVESTIGATOR  
Prof. JEAN-FRANCOIS LEPAGE

#### AFFILIATED RESEARCH CENTRE

MOTHER-CHILD RESEARCH CENTRE – CHU DE SHERBROOKE

#### RESEARCH AXIS

NEURODEVELOPMENT

#### COLLABORATORS

› Kevin Whittingstall, Mother-Child Research Centre  
– CHU de Sherbrooke

#### PROJECT

Multi-omics exploration of the endocannabinoid system in individuals with Fragile X syndrome  
before and after cannabidiol treatment



PRINCIPAL INVESTIGATOR  
Dr. FRANÇOIS CORBIN

#### AFFILIATED RESEARCH CENTRE

MOTHER-CHILD RESEARCH CENTRE – CHU DE SHERBROOKE

#### RESEARCH AXIS

RARE DISEASES AND NEURODEVELOPMENT

#### COLLABORATORS

› Prof. Jean-François Lepage, Sonia Abdelli (student, M.Sc.)

#### PROJECT

Natural history and early risk factors  
of individuals with Fontan circulation  
– The CANFON national cohort



PRINCIPAL INVESTIGATOR  
Dr. FRÉDÉRIC DALLAIRE

#### AFFILIATED RESEARCH CENTRE

MOTHER-CHILD RESEARCH CENTRE – CHU DE SHERBROOKE

#### RESEARCH AXIS

CARDIOLOGY

#### COLLABORATORS

› P. Chetaille, CHU de Québec, Université Laval  
› Fournier, CHU Sainte-Justine, Université de Montréal  
› W. Mawad, MUHC – Montreal Children's Hospital  
› J. Grewal (BC), I. Vonder Muhll (Alberta), J. Therrien  
(Quebec) R. Wald (Ontario), P. Khairy (Quebec), K. Harris  
(BC), A. Mackie (Alberta)

FIND OUT MORE +



#### PROJECT

Rare genetic variants at the origin of primary ciliary dyskinesia in people of French-Canadian origin



PRINCIPAL  
INVESTIGATOR

Dr. ADAM J. SHAPIRO

#### AFFILIATED RESEARCH CENTRE

RESEARCH INSTITUTE-MCGILL UNIVERSITY HEALTH CENTRE (RI-MUHC)

#### RESEARCH AXIS

RARE AND GENETIC DISEASES

#### COLLABORATORS

> Guillaume Lettre, M.D., CHU Sainte-Justine, Université de Montréal and CARTaGENE

FIND OUT MORE +



#### PROJECT

Post-extubation evaluation of stability in very premature infants (PEACE)



PRINCIPAL  
INVESTIGATOR

Dr. WISSAM SHALISH

#### AFFILIATED RESEARCH CENTRE

RESEARCH INSTITUTE-MCGILL UNIVERSITY HEALTH CENTRE (RI-MUHC)

#### RESEARCH AXIS

PERINATAL AND NEONATAL CARE

#### COLLABORATORS

> Dr. Sophie Tremblay, neonatologist,

FIND OUT MORE +



#### PROJECT

Perinatal mental health continuum for the prevention of childhood neurodevelopmental disorders during the postnatal period



PRINCIPAL  
INVESTIGATOR

Dr. ANNA MCKINNON

#### AFFILIATED RESEARCH CENTRE

RESEARCH CENTRE OF THE SAINTE-JUSTINE UNIVERSITY HOSPITAL

#### RESEARCH AXIS

MENTAL HEALTH AND NEURODEVELOPMENT

#### COLLABORATORS

> Tina Montreuil, Research Institute-McGill University Health Centre (RI-MUHC)  
> Prof. Genevieve Roch, Reproduction, maternal and child health research axis – CHU de QuébecPRIN

FIND OUT MORE +



#### PROJECT

Screening premature infants for kindergarten skills: the SKIPI feasibility study to improve identification of early signs of developmental problems



PRINCIPAL  
INVESTIGATOR

Prof. MARIE-NOËLLE SIMARD

#### AFFILIATED RESEARCH CENTRE

RESEARCH CENTRE OF THE SAINTE-JUSTINE UNIVERSITY HOSPITAL

#### RESEARCH AXIS

MENTAL HEALTH AND NEURODEVELOPMENT

#### COLLABORATORS

> Prof. Réjean Plamondon, Polytechnique Montréal  
> Prof. Anne Gallagher, Université de Montréal  
> Prof. Anne-Monique Nuyt, Université de Montréal  
> Prof. Miriam Beauchamp, Université de Montréal  
> Prof. Selcuk Guven, Université de Montréal  
> Prof. Mélanie Couture, Université de Sherbrooke

FIND OUT MORE +



#### PROJECT

Development of a new brief intervention tool to improve lifestyle habits in primary care for children aged 2 to 5



PRINCIPAL  
INVESTIGATOR

Dr. OLIVIER DROUIN

#### AFFILIATED RESEARCH CENTRE

CARDIOMETABOLIC HEALTH, DIABETES AND OBESITY RESEARCH NETWORK (CMDO) AND RESEARCH CENTRE OF THE SAINTE-JUSTINE UNIVERSITY HOSPITAL

#### RESEARCH AXIS

CARDIOMETABOLIC HEALTH

#### COLLABORATORS

> Dr. Lise Gauvin, Université de Montréal  
> Dr. Mélanie Henderson, CHU Sainte-Justine  
> Dr. Patricia Li, MUHC Research Institute  
> Dr. Marie-Eve Mathieu, Université de Montréal, Research Centre of the Sainte-Justine University Hospital  
> Dr. Andraea van Hulst, Ingram School of Nursing, McGill University  
> Dr. Tracie Barnett, McGill University,  
> Research Centre of the Sainte-Justine University Hospital

FIND OUT MORE +





# Mental health campaign projects

## PROJECT

Assessment of cannabis use among Canadian adolescents following legalization



PRINCIPAL INVESTIGATOR  
Dr. ROMINA MIZRAHI

## AFFILIATED RESEARCH CENTRE

DOUGLAS RESEARCH CENTRE, DOUGLAS MENTAL HEALTH UNIVERSITY INSTITUTE AND MCGILL UNIVERSITY

## RESEARCH AXIS

MENTAL HEALTH

## COLLABORATORS

- > Dr. Rachel Rabin, PhD., Investigator, Douglas Research Centre, Douglas Mental Health University Institute and Assistant Professor, Department of Psychiatry, McGill University
- > Muhammad Parvaz, PhD, Icahn School of Medicine at Mount Sinai, New York, NY

FIND OUT MORE +



## PROJECT

Horyzons-Canada: An online social therapy platform to support the mental health and well-being of young people accessing outpatient services in Quebec



PRINCIPAL INVESTIGATOR  
Dr. SHALINI LAL, PH.D.

## AFFILIATED RESEARCH CENTRE

DOUGLAS RESEARCH CENTRE, DOUGLAS MENTAL HEALTH UNIVERSITY INSTITUTE AND MCGILL UNIVERSITY

## RESEARCH AXIS

MENTAL HEALTH

## COLLABORATORS

- > Martin Lepage, PhD, and Ridha Joober, Douglas Research Centre, Douglas Mental Health University Institute and McGill University
- > Mario Alvarez-Jimenez, University of Melbourne, Orygen

FIND OUT MORE +



## PROJECT

Protocole SécUrgencePed: Adaptation and validation of an assessment and support protocol for young people at risk of suicide presenting to Quebec pediatric emergency departments



PRINCIPAL INVESTIGATOR  
Prof. JESSICA RASSY

## AFFILIATED RESEARCH CENTRE

RESEARCH CENTRE – CHU DE SHERBROOKE, FMSS ÉCOLE DES SCIENCES INFIRMIÈRES, AFFILIATED WITH GRIS

## RESEARCH AXIS

MENTAL HEALTH

## COLLABORATORS

- > Prof. Christine Genest and Dr. Camille Brousseau-Paradis, Université de Montréal
- > Joëlle Elias, nurse, Université de Sherbrooke
- > Prof. Nathalie Maltais, Université du Québec à Rimouski
- > Prof. Marjorie Montreuil, nurse, McGill University

FIND OUT MORE +



## PROJECT

Mental health of fathers and their children: A longitudinal study beginning in the prenatal period



PRINCIPAL INVESTIGATOR  
Prof. CÉLIA MATTE-GAGNÉ

## AFFILIATED RESEARCH CENTRE

RESEARCH CENTRE – MATERNAL AND CHILD HEALTH – CHU DE QUÉBEC

## RESEARCH AXIS

MENTAL HEALTH, POPULATION HEALTH AND OPTIMAL HEALTH PRACTICES

## COLLABORATORS

- > Gina Muckle and Emmanuel Bujold, Centre de recherche du CHU de Québec and Université Laval
- > Michel Boivin, Amélie Petitclerc and George Tarabulsy, École de psychologie and Université Laval
- > Isabelle Ouellet-Morin and Annie Bernier, Université de Montréal
- > Nicolas Berthelot, Université du Québec à Trois-Rivières

FIND OUT MORE +

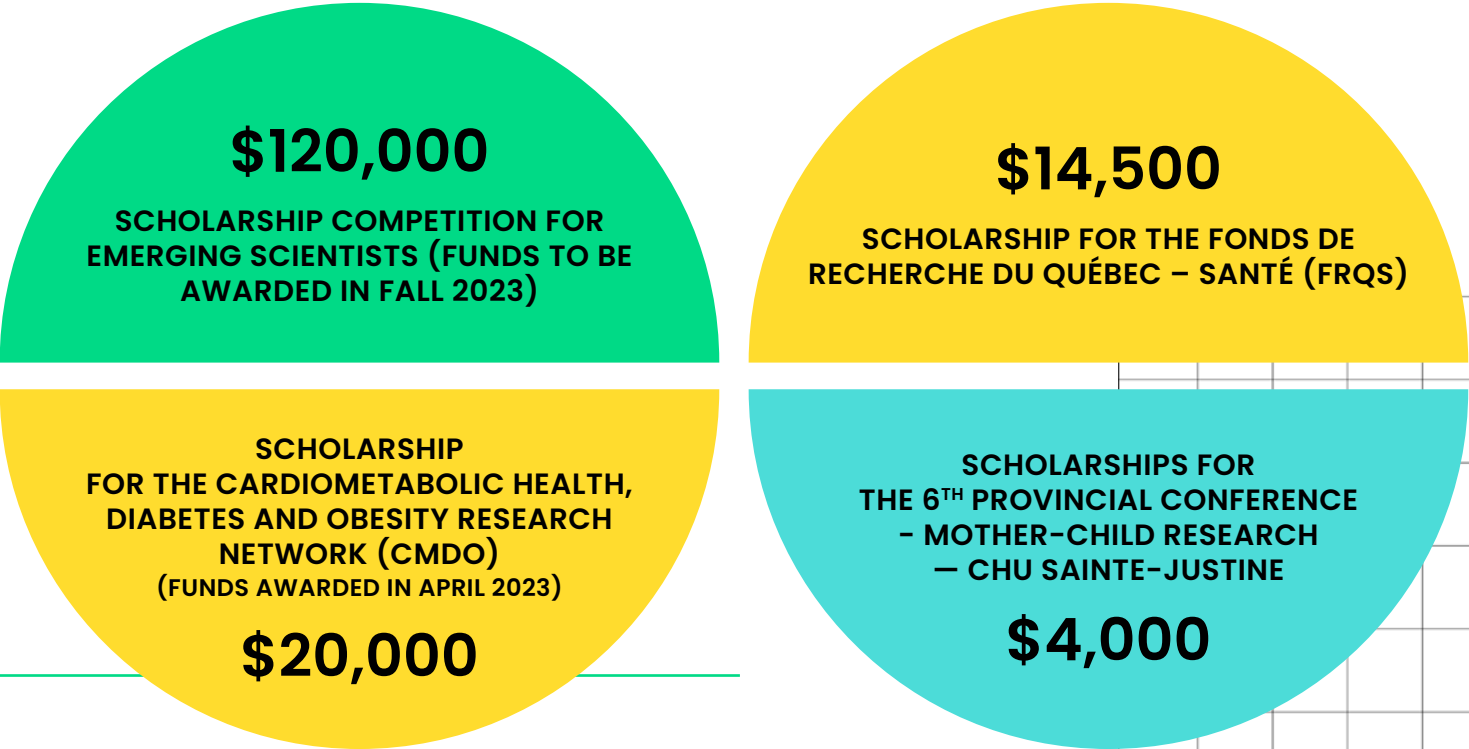


# Projects, grants, progress!

In 2022-2023, **\$700,000 was granted** by the Foundation to support 17 projects as part of its campaign for youth mental health research and 6 major research axes.

But that's not all: we were also able to award scholarships for excellence to promising young people and remarkable scientists.

## YOUNG RESEARCHER GRANTS



## DISTRIBUTION OF FUNDS RAISED



# Distribution of funds for pediatric research

PARTNERS	2022-2023	CUMULATIVE TO MARCH 31, 2022
McGill University Health Centre	\$98,714	\$30,089,398
CHU Sainte-Justine Pediatric Research Centre	\$133,714	\$30,147,022
Reproduction, maternal and child health – CHU de Québec <sup>(1)</sup>	\$81,815	\$7,057,008
Centre hospitalier universitaire de Sherbrooke (CHUS) – Department of Pediatric Research <sup>(2)</sup>	\$92,258	\$3,855,816
	\$79,000 <sup>(3)</sup>	
Scholarships from the Fondation pour la relève (FRQS)	\$14,500	\$1,088,164
Douglas Research Centre	\$100,000	-
Centre intégré universitaire de santé et services sociaux de la Capitale-Nationale	-	\$23,492
Dr. Nada Jabado – Special Project (brain cancer)		\$200,000
Child and Youth		\$100,000
Provincial Congress Award – Mother-Child Research	\$4,000	\$18,500
Centre of Excellence in Childhood Obesity		\$370,000
Prof. Isabelle Thibault (CHUS) – Eating Disorders	-	\$50,000
TOTAL	\$604,000	\$72,999,400

(1) Since 1985

(2) Since 1999

(3) Funds donated at the 10<sup>th</sup> Sherbrooke Wine Auction

The fiscal year end is March 31, 2023.

The audit of the financial statements of the Pediatric Research Fund was conducted by the firm Gosselin et associés.





# Our mental health campaign and builders' match fund

## 2022-2023 CAMPAIGN: TOGETHER FOR YOUTH MENTAL HEALTH

The pandemic is now behind us, but it has left a sad legacy, particularly on the mental health of children and young people. Confinement, home schooling, virtual friends, the loss of social references and many other consequences of COVID-19 have severely strained the psychological balance of our young people.

That's why the Pediatric Research Foundation has decided to focus its 2022-2023 campaign on mental health, with the theme [Child and Youth Mental Health Research](#).

## PRF BUILDERS' MATCH FUND: DOUBLING THE GENEROSITY

Created in fiscal 2021-2022, the Foundation's Builders' Match Fund was created following the commitment of three of our generous builders to double contributions from one-time gifts. This means that if you donate \$500, our builders will contribute the same amount to the fund. The more one-off donations there are, the more generous these three companies are!

The 2022-2023 year marked the second year of this commitment, and saw Power Corporation of Canada, iA Financial Group and Scotiabank contribute a total of \$150,000 to the cause of children's health, an amount equivalent to all the one-time donations received.

Besides supporting eight mental health research projects—the central theme of our 2022-2023 campaign—this sum will ensure the sustainability of many of the Foundation's ongoing projects, since the commitment of these builders is for a four-year period.

Thank you to all our individual and corporate donors who have contributed through their donations to the generosity of our builders.



# Our relationship marketing campaigns

These are important pillars of our annual campaigns. Each year, whether by letter, e-mail, telephone conversation or telemarketing campaign, you have shown your sensitivity, interest, curiosity and commitment to this cause that is close to your heart.

## Four campaigns were launched over the past year

- **Our donor newsletter**, published in June 2022, kept you informed of our researchers' progress and gave you the latest news on the Foundation's activities.
- **The 2023 agenda** with Élodie's story, sent to donors in fall 2022, is as popular as ever.
- **The 2022 Christmas campaign**, which shared Liam's touching story.
- **The early-year campaign**, rolled out in February 2023, raised awareness of our theme and kicked off our fundraising activities.

## Proven effectiveness

Our efforts are bearing fruit thanks to all of you and our relationship marketing:

2,309 donors make a gift every month, and this alone helps us raise \$406,685 a year.

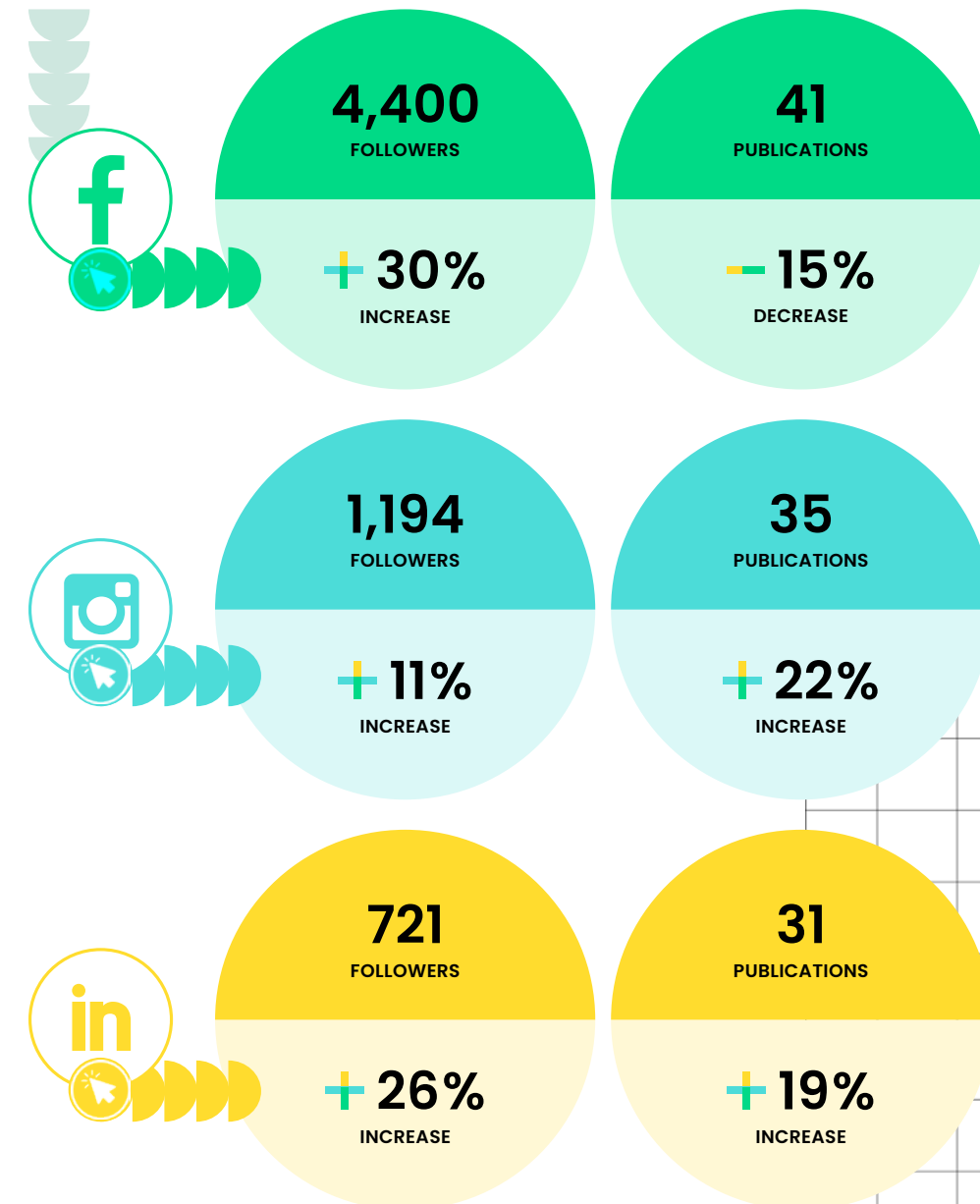
Our four annual campaigns generated \$350,921 in 2022–2023.

Donations totalling  
\$757, 606

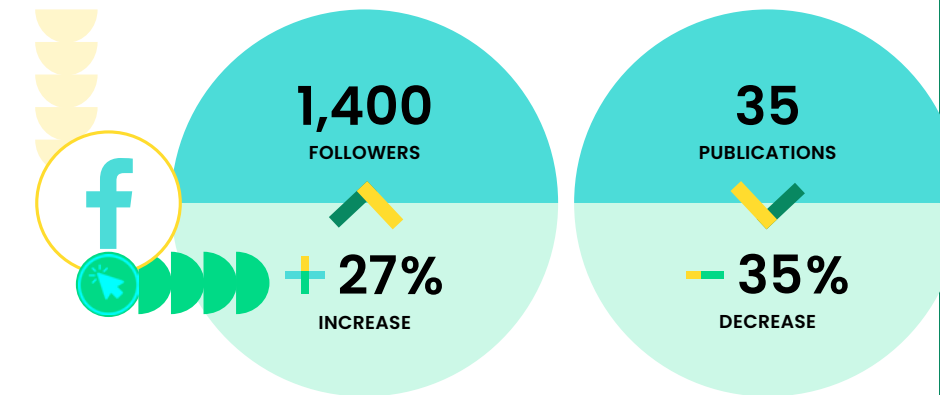


# The Foundation in social media

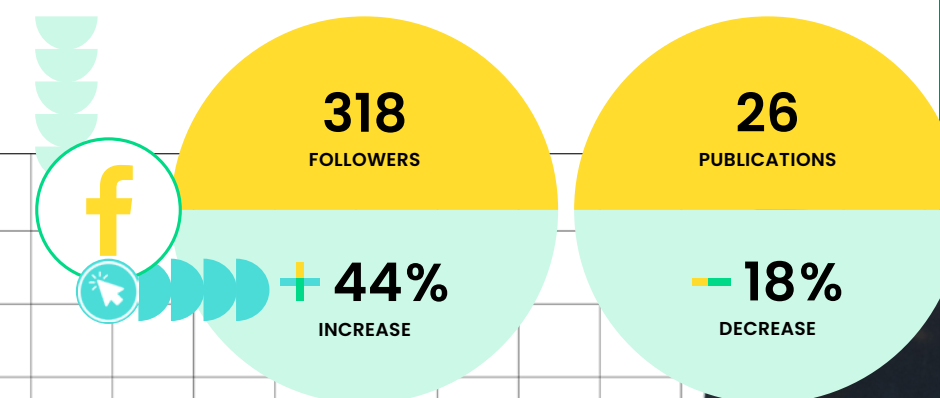
## FONDATION



## TOUGH MOUNTIE CHALLENGE ON FACEBOOK



## ALPINE CHALLENGE ON FACEBOOK



The 2022–2023 year was marked by a number of virtual innovations at the Foundation.

First came our new website, [pediatricresearchfoundation.ca](https://pediatricresearchfoundation.ca), launched in May 2023. Along with our new brand image and featuring all-new content, it has all the analytical tools we need to track and manage visits and traffic.

Our change of name and brand image has also been complemented by new identifiers on social media.

For all the latest news and to find out about the progress of the research projects we support, type @pediatricresearchfoundation.







## Our events

The year 2022 will be remembered for letting us get back to business as usual, or close to it. As a result, our fundraising events demonstrated an enthusiastic participation and a tremendous outpouring of generosity!

JUNE 6, 2022

### 16<sup>th</sup> Montreal Wine Auction

A genuine tradition, this popular auction is an annual opportunity for wine lovers to discover excellent vintages while supporting research. The 2022 Auction, which featured an evening auction and a silent auction on the legor platform, was a resounding success.



Amount raised (2022) | **\$205,000**



Total donations since the beginning | **\$2,646,192**





JUNE 8, 2022

## 1<sup>st</sup> Réseautage et Pinotage Event – Young Leaders Circle

Making its debut in the fall of 2022, this networking happy hour—focused on our cause—is a new event that is sure to become a tradition. It’s a chance for emerging businesspeople to socialize in a relaxed atmosphere, while supporting the Foundation and discovering renowned wines.

Amount raised (2022) | **\$10,000**

Next edition | **September 27, 2023, Phi Centre (Montreal), 6 p.m.**



OCTOBER 1, 2022

## 5<sup>th</sup> Tough Mountie Challenge

The fifth edition of this sporting challenge was once again brilliantly taken up by athletes from all walks of life. Held simultaneously in Montreal, Quebec City, Sherbrooke and Gatineau, this urban trail obstacle course is modeled on police training.

Amount raised (2022) | **\$181,945**

Total donations since the beginning | **\$618,563**

OCTOBER 19, 2022

## 1<sup>st</sup> Major Donor Recognition Cocktail

Generous and always eager to help, our major donors received heartfelt thanks at this event held at Le Parloir, an exclusive wine club where members can keep wines in private cellars at their disposal. Named the best private wine club in Eastern Canada, Le Parloir opened its doors to us for a cocktail party with 30 guests, 3 researchers and a sommelier.

## 1<sup>st</sup> Bécane et Bottines Corporate Challenge – Young Leaders Circle

This sporting challenge is intended for teams comprising employees of the same company, who must run, swim or bike for the cause in order to complete a 500-km course, sponsored at a rate of at least \$1 per kilometre.

Amount raised (2022) | **\$14,432**



DECEMBER 1, 2022

## 10<sup>th</sup> Sherbrooke Wine Auction

The Eastern Townships' wine event of the year once again showcased the vitality of its organizers and donors! Held for the 10<sup>th</sup> year in 2022, the event attracted epicureans from all over the region who are committed to the cause of children's health research.

Amount raised (2022) | **\$129,770**

Total donations since the beginning | **\$1,086,770**



FEBRUARY 18 AND MARCH 11, 2023

## 2<sup>nd</sup> Défi Alpine à Ski La Réserve et à Owl's Head

Alpine touring (skis with sealskin) is the hottest sport these days among snow, challenge and mountain enthusiasts. For the Foundation, it's also a great opportunity to give athletes the chance to support the cause of research into childhood diseases, by taking on summits solo or as a team at Ski La Réserve (Laurentians) and Owl's Head (Eastern Townships).

Amount raised (2022) | **\$179,104**

Total donations since the beginning | **\$478,786**





# Our **public** activities and **initiatives**

To the delight of generous individuals, the Foundation's fundraising activities returned in 2022 after a two-year absence . . . and they were a huge success!



Amount raised (2022) | **\$16,250**



OCTOBER 18, 2022

## 38<sup>th</sup> Royal Canadian Mounted Police Spaghetti Dinner

Held at the Omni Mont-Royal hotel, featuring cavalry and bagpipes, this dinner-event for the general public was back after being held virtually for two years (2020 and 2021). This gathering has once again shown that you can have a good time while supporting a worthy cause.

Total donations since the beginning | **\$544,809**



# Partners and support

Each year, the following companies provide us with support through special theme days, percentage of sales or promotional products.



MARCH 31, 2023

## Somodif Textile Recycling Canada inc.

A partner of the Foundation for 21 years, Somodif helps raise funds through its clothing recycling program.

Amount raised | \$10,000

Total Somodif donations since the beginning | \$444,900



DECEMBER 31, 2023

## Saint-Viateur Bagel

For 38 years, the Morena family, owners of this Montreal institution, have been fundraising in their cafés and bakeries and making donations to the Foundation.

Amount raised | \$5, 007

Total St-Viateur Bagel donations since the beginning | \$349,209



AU 31 JANVIER 2023

## Kiehl's

For each *Body Cream* sold in December 2022 and January 2023, Kiehl's gave \$10 to the Foundation, something it has been doing for the past four years.

Amount raised | \$20,000

Total Kiehl's donations since the beginning | \$87,550

## Other generous donors

They raise funds, canvass their entourage, create events or promotional items to give us a helping hand. Their generosity deserves to be recognized.

L'Enfantillon, enfants et maternité store | Laval

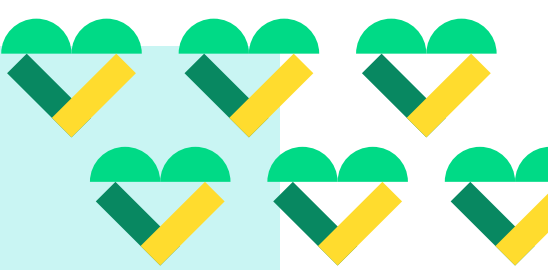
Boutique Seconde Main | Drummondville

John Caboto Academy | Montreal

Young Leaders Circle Events | Montreal

Ghislain Leblanc's tour | Montreal

Napperon de la recherche | Across Quebec



# Our Board of Directors

Passionate and influential people who give of their time, lend their talents and are always there to support the cause of children’s health research.

## Chair of the Board

### Alain Auclair

Managing Director, Head of Investment Banking  
UBS Securities Canada

## Vice-Chair

### Roy Bourque

President, R.P. Bourque Consultant Inc.

## Vice-Chair

### Jean-Michel Filiatrault

Vice-President, Corporate Development  
GardaWorld

## Treasurer

### Yves Léveillé

Member of Lions Clubs International

## Secretary

### Amélie T. Gouin

Senior Associate, Bordon Ladner Gervais

## Other board members

### Guillaume Bougie

Portfolio Manager, Institutional  
Client Partnerships Desjardins  
Global Asset Management

### Benoit Crowe

Vice-President and CEO  
Financière Novexco

### Anne-Marie Guertin

Strategic Account Director  
Imagia Inc.

### Dr. Indra Gupta

Professor, Faculty of Medicine,  
McGill University, Department of Pediatrics,  
Division of Nephrology, MUHC

### Karen Hamelin

Strategic Account Director  
Salesforce Marketing Cloud

### Mia Morisset

Vice-President  
Invovia Capital

### Dr. Bruno Piedbœuf

Director, Reproduction, Maternal  
and Child Health Research Axis  
CHU de Québec-Université Laval

### Marie-Ève Savard

Portfolio Manager  
EVA Holdings

### Maxime Tull

Portfolio Manager Private Wealth  
Management, Jarislowsky Fraser

# Our Scientific Committee

The members of our Scientific Committee review applications for financial support, make recommendations and select the research projects to be funded.

**Dr. Indra Gupta**, Professor, Faculty of Medicine, McGill University,  
Department of Pediatrics, Division of Nephrology, MUHC

**Dr. Anne-Monique Nuyt**, Chief, Neonatology Department,  
CHU Sainte-Justine, Professor, Faculty of Medicine, Université de Montréal

**Dr. Bruno Piedbœuf, M.D., FRCPC**, Director, Reproduction,  
Maternal and Child Health Research Axis, CHU de Québec-Université Laval

**Dr. Jean-Paul Praud, M.D., Ph.D.**, Pediatrics and Physiology Department,  
CIUSSS de l’Estrie-CHUS

## Scientific strategic advisor

**Dr. Guillaume Sébire**, Child Neurologist, Clinical Researcher, Director of the Division  
of Child Neurology. Professor, Department of Pediatrics, Faculty of Medicine and  
Health Sciences, McGill University

# Young Leaders Circle

A committee of influential young people and emerging stars from the business world, who, through innovative events, help raise the visibility of the Foundation and recruit new generations of donors

### BENOÎT-GABRIEL CORRIVEAU

Senior Director, Corporate Finance,  
PricewaterhouseCoopers

### CAMILLE DIONNE

Senior Talent Management Director,  
Dialogue

### VÉRONIQUE FORTIN-LATREILLE

Lawyer, Osler, Hoskin & Harcourt LLP

### NAOMI FRANCŒUR-VALLIÈRE

Senior Associate, Fiera Comox Partners

### MAXIME LEBEAU

Vice-President and Practice Leader, Mandrake

### MARC-ANDRÉ LEMIEUX

Associate Director,  
Investment Banking, Scotiabank

### JEAN-FRANÇOIS MALO

Management Consultant

### MIA MORISSET

Director, Invovia Capital

### GENEVIÈVE PHILION

Vice-President, Sagard Holdings

### VIRGINIE SÉGUIN-DALPÉ

Senior Partner, Caisse de dépôt  
et placement du Québec



# Our Governors

They have left their mark through their consistent generosity in support of children’s causes.

## GOVERNORS

André Archambault.....Richelieu  
Michael A. Baker.....Lions Club  
Réal Bédard.....Optimists Club  
Victor Cayer.....Richelieu  
Ted Coqueran.....Civitan  
Dr<sup>e</sup> Dolly Dastoor.....Zonta  
John Derrick.....Knights of Pythias  
Gaétan Drapeau.....Optimists Club  
Michel Fecteau.....Lions Club  
David Guttman.....B’nai Brith  
Roger Héту.....Knights of Columbus  
Jacques Lussier.....Knights of Columbus  
Richard Malkin.....Civitan  
Diane Napier.....Optimists Club  
Garry Stein.....Rotary Club  
Hyman Sternfeld.....Knights of Pythias  
Louis Vaillancourt.....Kiwanis Club  
Terry Webster.....Civitan  
Jack Westaway.....Kinsmen

## GOVERNORS FOR LIFE (PAST PRESIDENTS)

Jean-Luc Bélanger.....Optimists Club  
Roy Bourque.....Lions Club  
Robert E. Carroll.....Kiwanis Club  
Jacques Dubuc.....  
Michael Fogel.....B’nai Brith  
François Gérin-Lajoie.....Rotary Club  
Michel Lanteigne.....  
Yves Léveillé.....Lions Club  
Andrew Marleau.....Kinsmen  
Jean Tremblay.....Kiwanis Club  
Lionel Tremblay.....Lions Club

## GOVERNORS FOR LIFE

Gérard Bensaid.....Civitan  
Jim Guinta.....Richelieu  
Ricky Held.....B’nai Brith  
Murray Kozlick.....Rotary Club  
Tony Pensato.....Richelieu  
I. Murray Phillips.....Kinsmen  
Howard Popliger.....  
Sheldon Popliger.....  
Peter Sternberg.....

## HONORARY GOVERNORS

Julie Breau  
Stéphane Di Patria  
Normand Dorion  
Graziano Iampetrio  
Ghislain Leblanc  
Marcel Martineau  
Marcel Rolland

# Our team

The Pediatric Research Foundation can always count on a solid [team of eight people](#).

Seasoned professionals for whom the cause of research into children’s diseases is a daily priority.

**Josée Saint-Pierre**  
President and CEO

**Sylviane Chatel**  
Development Director

**Sarah Kemerer**  
Events Director

**Anie Beaudoin**  
Communications  
and Events Advisor

**Carole Lalande**  
Executive Assistant  
and Provincial Activities

**Carole McDermott**  
Coordinator, Data Management  
and Donor Services

**Margot Lanièce**  
Events Coordinator (internship)

**Mireille Vaillant**  
Chief Accountant  
and Head of Internal Audits



# Our donors

## \$1,000 to \$4,999

Fondation J. Rodolphe - La Haye  
École Polyvalente le Carrefour  
Groupe Finition de l'Estrie  
Trans-Herbes Inc.  
Alicia Moffet  
CGF/Capital Markets  
Normandin Beaudry Gestion Privée  
Nathalie Anne Belliveau\*  
Marc-André Nantais\*  
Alexandre Couillard  
Sara Joli-Coeur  
Bleu blanc rouge  
Dendratec Ltée  
Entreprise Location\*  
ModulaSon\*  
Boutique WAX\*  
CTR\*  
Printeez\*  
RONA Giroux & Giroux\*  
Ministère de l'éducation  
Ministère des finances  
Placements La Clarington Inc.  
Laurie Girard  
Gabriel Lavigne  
Frédéric Vallée Daigneault  
Fraternité des policiers et policières de Montréal  
BMR  
PricewaterhouseCooper LLP  
Service de Police Ville de Lévis  
Rezin  
John Caboto Academy

Boutique Seconde Main  
Ville de Sherbrooke  
L'Empire Compagnie d'Assurance-vie  
Fondation Douglas  
Excavation M. Toulouse Inc.  
Lakeshore Civitan Club Inc.  
Alnylam US Inc.  
Aubainerie Rivière-Du-Loup  
Fondation RBC  
Fondation Denise et Robert Gibelleau  
Langlois Avocats (Gestion LKD)  
Finition de l'Estrie  
NSI Solution  
Fédération des caisses Desjardins  
DG One Inc.  
Mike Cyr Agence Immobilière  
Papier Résolu  
Corporation Girardin Inc.  
Construction Longer Inc.  
Igor Encan\*  
Jean-Claude Rabbat  
Audi Sherbrooke  
Sherbrooke Toyota  
Hyundai Sherbrooke  
9130-7074 Québec Inc.  
BMW Sherbrooke  
Raymond Chabot Grant Thornton  
Royal LePage Évolution  
N.V. Cloutier Inc.  
FNX-Innov  
Anonymous\*  
Anonymous\*  
Collège Laval P.C.  
Knights of Columbus  
du Conseil Bon Accueil 8558

## \$5,000 to \$7,499

Anonymous  
Fondation Famille Zakuta  
Fondation Famille Charles Pellerin  
Champlain Financial Corporation  
Gestion Carrier Sauvé  
Sail Plein Air Inc.  
Lassonde Industries Inc.  
Altium Architecture de Patrimoine  
Subaru Montréal  
Fondation CIBC  
Métro Richelieu Inc.  
Owl's Head\*  
Ski La Réserve\*  
Télé Québec\*  
RX ONE\*  
Société de Gestion Sogefor Inc.  
Fondation Chamberland Tremblay  
Thibault GM Sherbrooke  
Nicolas Ranger  
St-Viateur Bagel  
Stantec Consulting Ltd  
Alnylam US Inc.  
Fondation Jacques & Michel Auger

## \$7,500 to \$9,999

Trudel Immeubles  
Pétroles Crevier Inc.  
Sanimax Inc.  
McKinsey & Compagnie  
McCarthy Tétrault

Bank of America  
Vulcan Hoist-Palan  
Anonymous  
Fondation Groupe AGF

## De 10 000 \$ à 19 999 \$

KPMG  
Somodif Textile Recycling Canada Inc.  
J.P. Morgan Securities LLC  
Banque Nationale du Canada  
Banque Nationale Marchés Financiers  
Novexco Inc.  
CAE Inc.  
Coaching Financier Trek  
Hudson Supplies Inc.  
GardaWorld  
Royal Canadian Mounted Police  
Fonds Jacqueline et Léo Chatel  
Quincaillerie Richelieu Ltée.

## \$20,000 to \$50,000

Hôtel William Gray\*  
Hôtel Omni\*  
Deloitte Canada  
L'Oréal Canada Inc. / Kiehl's.  
Air Canada Foundation\*  
iA Groupe financier  
Scotiabank  
Caisse Desjardins  
des policiers et policières  
Power Corporation du Canada

\*GIFT IN KIND (PRODUCTS OR SERVICES).





# Help us accelerate cure for kids

To make a donation or give of your time, for questions or more details on the support we offer and the impact it has, please contact us.

## **Pediatric Research Foundation**

205-370 Guy Street, Montreal, Quebec H3J 1S6

Email: [info@fondationrecherchepediatrique.ca](mailto:info@fondationrecherchepediatrique.ca)

Toll free: 1 800 665-2358

Montreal and surrounding areas: 514 595-5730

[pediatricresearchfoundation.ca](http://pediatricresearchfoundation.ca)



**Pediatric  
Research  
Foundation**

## **Suivez-nous !**

-  [facebook.com/Fondationrecherchepediatrique](https://facebook.com/Fondationrecherchepediatrique)
-  [instagram.com/Fondationrecherchepediatrique](https://instagram.com/Fondationrecherchepediatrique)
-  [youtube.com/user/Fondationdesetoiles](https://youtube.com/user/Fondationdesetoiles)
-  [flickr.com/photos/Fondationdesetoiles](https://flickr.com/photos/Fondationdesetoiles)

CRA registration number: 891-9935-45-RR-0001